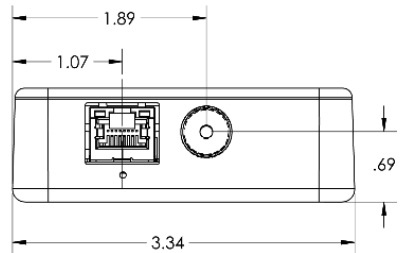
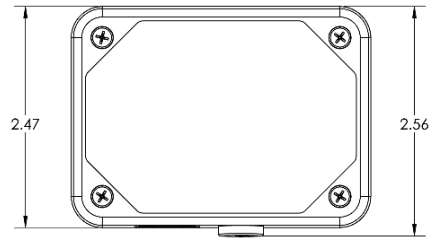


MOUNT THE DEVICE

- Place the device as close as possible to a high efficiency 8-Ohm horn/loudspeaker.
- For outdoor use, install device inside weather-resistant electrical box (not provided).
- Adhesive tape provided on bottom of device to help with placement in box if needed.
- Strip 12-18 AWG speaker wire from speaker to 11mm.
- Use supplied wire connectors to attach the speaker wire pair to the output speaker wire pair on the IPSMOD by using the flip lever retention features.



CONNECT TO THE NETWORK

- Apply included sealant gel to the female connectors of the RJ-45 port (PoE/PoE+) if installing outdoors.

- Connect a network cable (CAT 5 or better) to the RJ-45 port labeled PoE/PoE+.
- Connect the other end of the network cable to an LPS (Limited Power Source) PoE (Power over Ethernet) network switch or PoE injector on a network with a DHCP server.
- Power LED should light up green with power. The yellow LED indicates network activity.
- The device should acquire an IP address and boot up within 2-3 minutes.

ACCESS THE DEVICE

Use one of these methods to access the device:

- Enter the IP address assigned by the DHCP server in a browser.
- Enter the IPv6 link-local address in a browser, formatted as ***http://[fe80::2246:f9ff:feXX:XXX X]*** (XX:XXXX = the last 6 digits of the MAC address).
- In IPClockWise, double-click on the device in the Endpoints list to open the web server interface.

For third-party software applications, consult the guide for access method (often via configuration file). For instructions on sending audio to the device, sign into the customer portal (www.anetd.com/portal-login/) to download the IPClockWise User Manual or see your third-party software guide.

TROUBLESHOOTING

If the device becomes unresponsive after setting a static IP address, you can reset to factory default settings by accessing the reset button via the pinhole under the Ethernet jack. Use a paperclip to press and hold the button for at least five seconds. The green LED will turn off, and the device will reboot with the factory default settings applied.

RESOURCES

User Support:

<https://www.anet.com/user-support/>

AND Limited Warranty:

<https://www.anetd.com/warranty/>

AND Legal Disclaimer:

<https://www.anetd.com/legal/>