

[AN054]



ADVANCED
NETWORK DEVICES

Migrate IPClockWise Settings to Another PC or VM

Version 1.1

8/16/2018

© 2018 ADVANCED NETWORK DEVICES

3820 NORTH VENTURA DR.

ARLINGTON HEIGHTS, IL 60004

U.S.A

ALL RIGHTS RESERVED

PROPRIETARY NOTICE AND LIABILITY DISCLAIMER

The information disclosed in this document, including all designs and related materials, is the valuable property of Digital Advanced Network Devices and/or its licensors. Advanced Network Devices and/or its licensors, as appropriate, reserve all patent, copyright and other proprietary rights to this document, including all design, manufacturing, reproduction, use, and sales rights thereto, except to the extent said rights are expressly granted to others.

The Advanced Network Devices product(s) discussed in this document are warranted in accordance with the terms of the Warranty Statement accompanying each product. However, actual performance of each product is dependent upon factors such as system configuration, customer data, and operator control. Since implementation by customers of each product may vary, the suitability of specific product configurations and applications must be determined by the customer and is not warranted by Advanced Network Devices.

To allow for design and specification improvements, the information in this document is subject to change at any time, without notice. Reproduction of this document or portions thereof without prior written approval of Advanced Network Devices is prohibited.

TROUBLESHOOTING AND ADDITIONAL RESOURCES

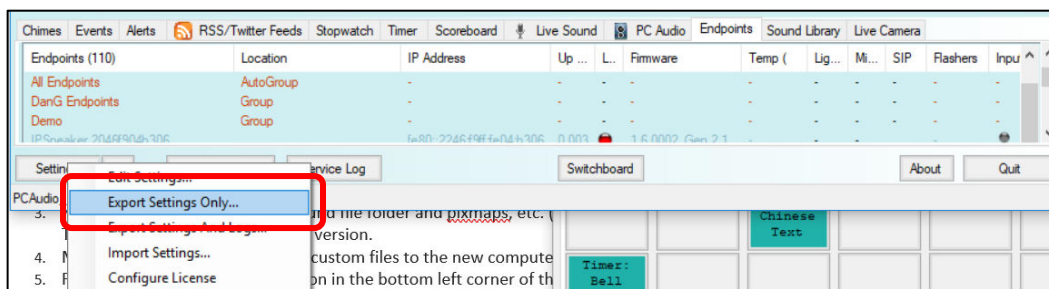
Complete Support Site with User Guides & Help: <http://www.anetdsupport.com/>
Additional App Notes: <http://www.anetdsupport.com/AppNotes>
Customer Feedback Survey: <http://www.anetdsupport.com/survey>
AND Legal Disclaimer: <http://www.anetd.com/legal>

OVERVIEW

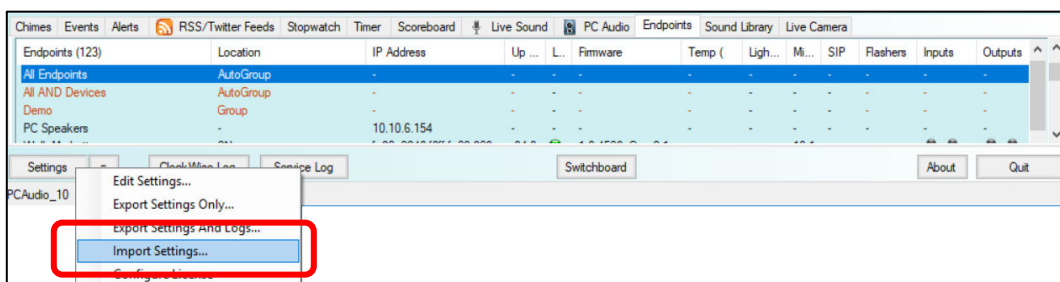
IPclockwise allows migration of settings from one computer or virtual machine (VM) to another.

MIGRATION PROCESS

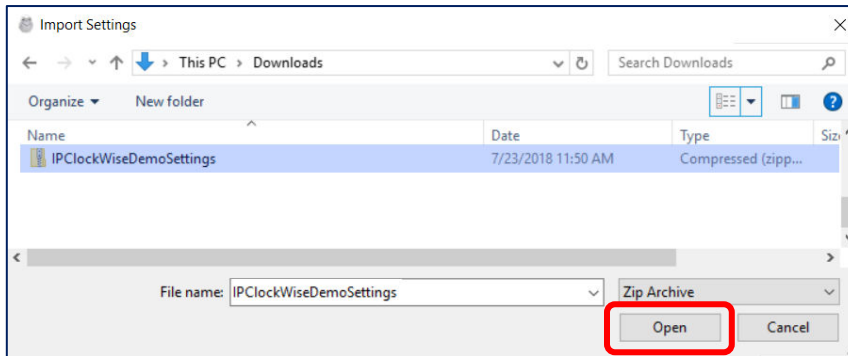
1. Right-click on the Settings UI button in the bottom left corner of the IPclockwise application window of the existing VM or computer.
2. Select *Export Settings Only...* or *Export Settings and Logs...*



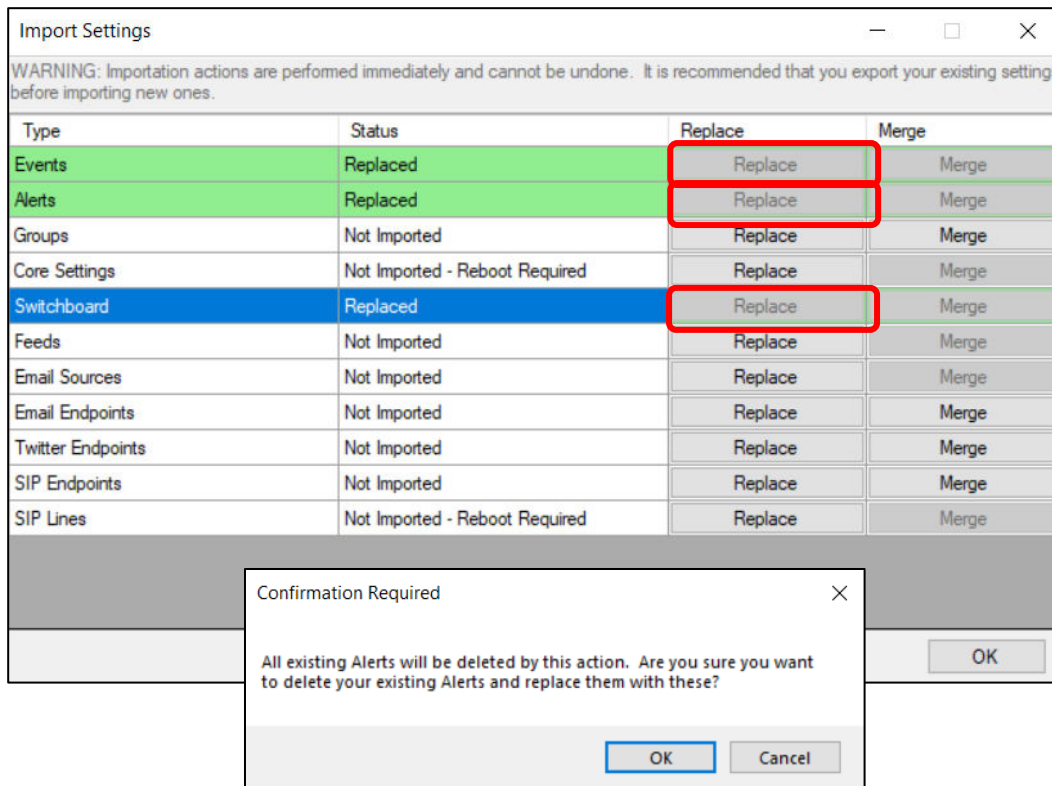
3. Manually copy the contents of Sound File folder and Pixmaps, etc. (C:/Program Data/clockwise) We will automate this step in a future version. Note: If you do not see the Program Data folder, you may need to open Windows Explorer folder options to *Show Hidden Files and Folders*.
4. Move the resulting zip folder and custom files to the new computer into the same exact directory.
5. Right-click on the Settings UI button in the bottom left corner of the application window of the new VM, and select *Import Settings*.



- Find the *Exported Settings Zip* file that you created in Step 2 above.



- In the resulting dialog box, choose Replace for each type of setting.



You also have the option to Merge each particular settings import with your current settings. This options enables your current settings and any changes to the new VM or computer to remain in place after importing these settings.

- Click *OK*. IPclockWise will restart and everything will be identical to the previous VM.