

# IPCDS-RWB-U

Double-Sided IP Display



## Overview

Enhance notification in corridors and hallways using the PoE Double-Sided IP Display (Universal Mount). Display countdown timers and announcements using multi-colored text, LED flashers, and two 4 inch speakers that can be seen and heard from both sides of the device.

The universal mount provides the option to mount from the wall or ceiling. The IPCDS-RWB-U easily integrates with VoIP phone systems, approved 3rd party software, and includes ClockWise Campus software with purchase.

## Description

2:46 PM  
42

### DISPLAY

Multi-color LED scrolling text and pixel graphics.  
1-line or 2-line display.



### MICROPHONE

Hands-free two-way intercom.



### FLASHER

One red, one white, one blue LED flasher.  
Individually controlled.



### AUDIO

Two 4" high-efficiency speakers.  
Audio coverage up to 600ft<sup>2</sup> on each side.



### PERIPHERAL INTEGRATION

Connect a strobe, motion sensor, electronic lock, call button, etc.



### SOFTWARE

ClockWise Campus software included.  
Compatible with approved third-party software.



### SIP INTEGRATION

SIP-enabled.  
Easily interfaces with VoIP / SIP phone systems.



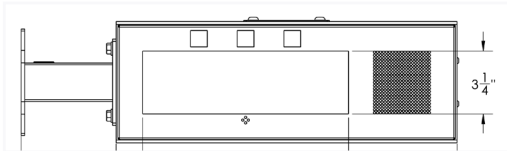
### LIGHT SENSOR

Auto-dimming display.

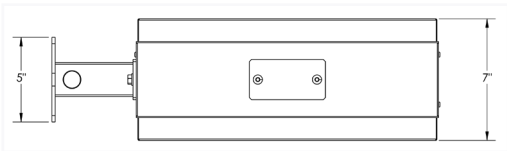
Solutions	Additional Features	Compatible Peripherals
<ul style="list-style-type: none"> <li>Paging</li> <li>Intercom</li> <li>Bell scheduling</li> <li>Code alerts</li> <li>Emergency notification</li> <li>Music streaming</li> </ul>	<ul style="list-style-type: none"> <li>Built-in web server</li> <li>Full multicast and broadcast support</li> <li>Requires Cat5 or Cat6 cable</li> <li>Atomic time</li> </ul>	<ul style="list-style-type: none"> <li><b>Strobe Kit</b> <ul style="list-style-type: none"> <li>AND-STROBE-KIT-1 *Requires AND-PIA-2D</li> </ul> </li> <li><b>Call Button Kit</b> <ul style="list-style-type: none"> <li>AND-BTN-KIT-1 *Requires AND-PIA-2D</li> </ul> </li> <li><b>Peripheral Interface Adapter Board</b> <ul style="list-style-type: none"> <li>AND-PIA-2D</li> </ul> </li> </ul>

Dimensions

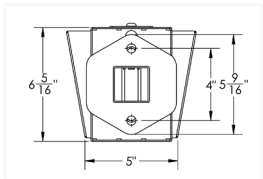
(Dimensions are subject to change)



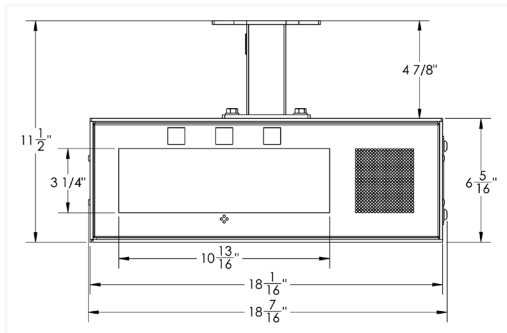
Wall Mount Front



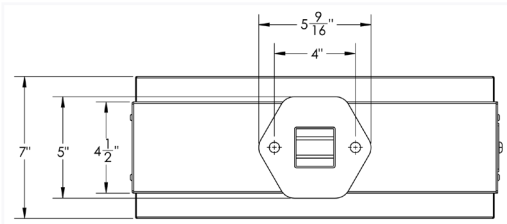
Wall Mount Top



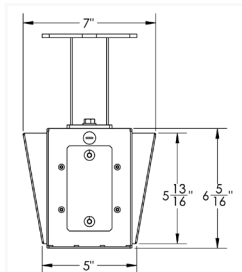
Wall Mount Side



Ceiling Mount Front



Ceiling Mount Top



Ceiling Mount Side

Specifications

Due to continual product development, specifications are subject to change without notice.

Power Input	PoE (IEEE802.3af) 15.4 W or PoE+ (IEEE802.3at) 30.0 W (recommended)
Ethernet I/F	10/100 Mbps
Speaker Size	4"
Audio Power	8 W / 16 W
Frequency Response	150 Hz - 17 kHz
Audio Payload Types	G711, A-law and $\mu$ -law
Average Sensitivity	94dB, 1W / 1 M
Supported Protocols	SIP, IPv4, IPv6, 802.1X, HTTP, SLP, TFTP, NTP, SNMPV1 & SNMPV2c, DHCP, IGMP, ICMP, TCP/IP, LLDP-MED, UDP, MDNS & MDNS-SD
General Purpose Interface	2 GPI via AND-PIA-2D 1 GPO: Contact Closure or 12 VDC / 15 VDC via AND-PIA-2D
Audio Interface	Analog Line Out via AND-PIA-2D Analog Line In via AND-PIA-2D
Operating Temperature	14° TO 122° F (-10° TO 50° C)
Dimensions	Wall Mount: 22.9" W x 6" H x 7" D (including mount) Ceiling Mount: 18" W x 11.5" H x 7" D (including mount)
Weight	22 lbs (9.98 kg)
Warranty	2 Year Limited

